

## TheFence™ Access Risk Management (ARM): SoD & Least Privilege

TheFence™ ARM is an automated ERP risk assessment and process control solution that helps measure the access risk of identities, users, and their profiles within business applications and IT infrastructure layers. Companies can detect the riskiest identities and which access right elements can be sensitive or conflicting in their access profiles. Based on the results, unnecessary, yet high-risk functions can be detected and removed in order to prevent incidents.

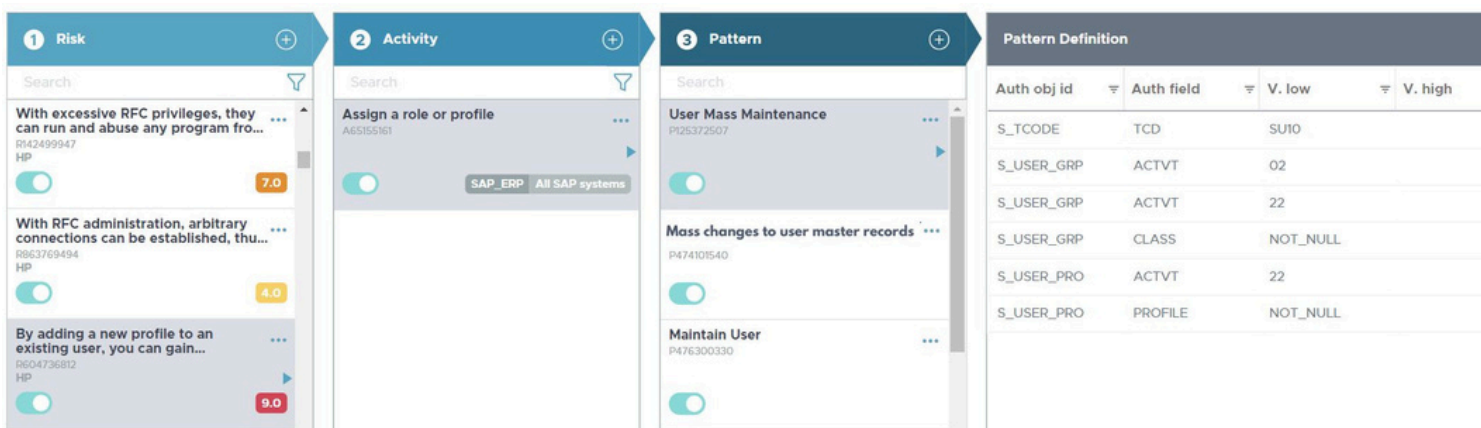
### Why TheFence™ ARM?

- Organizations should **automate and expedite continuous risk assessments**, minimizing human errors and inefficiencies associated with slow manual processes.
- TheFence ARM prevents criminals from gaining **unauthorized access to corporate environments** through stolen credentials, safeguarding against potential data breaches and financial losses.
- TheFence ARM addresses the significant threat of credential stealing in **low and high-profile attacks**, ensuring protection against data loss, fraud, operational disruption and reputation damage.
- TheFence ARM ensures: adherence to the **Principle of Least Privilege (PoLP)**, the **need-to-know approach** and compliance standards, averting potential fines and curbing unnecessary expenses linked to non-compliance.

### How does TheFence™ ARM work?

- Granular analysis of all users' digital permissions
- Discovery of conflicting rights
- Pinpointing excessive privileges
- Locating unnecessary digital rights
- Embedded set of Rules & Patterns

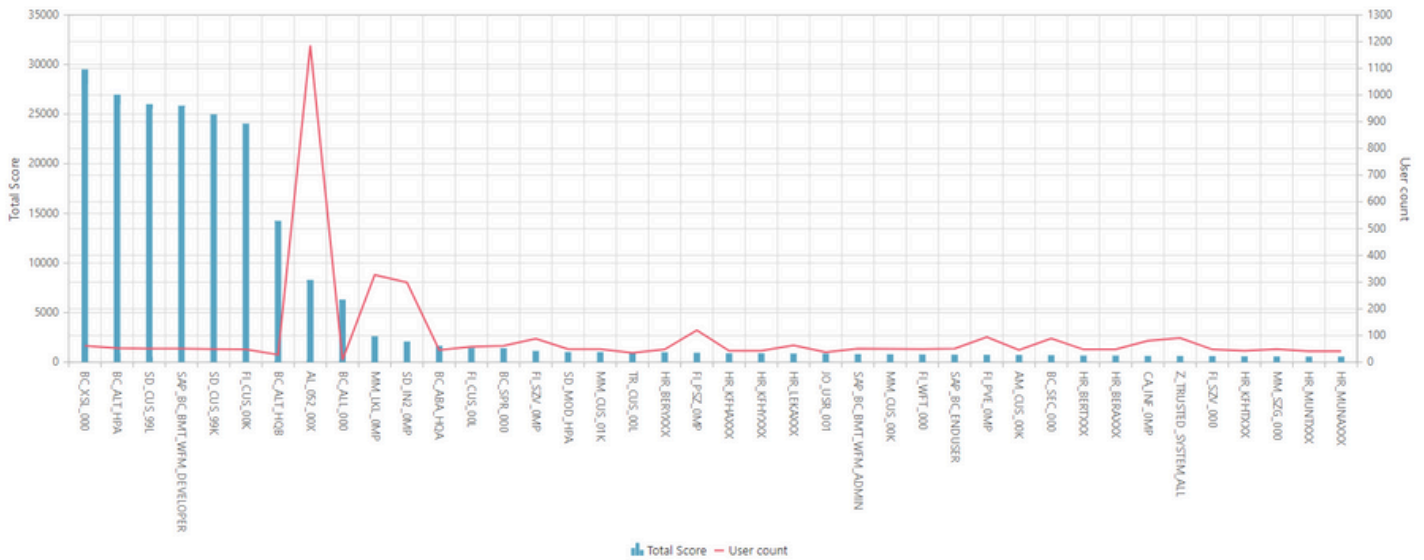
The discovery process is based on a granular analysis of the access profile content. TheFence ARM automatically connects to the monitored systems to collect user and authorization data at the deepest entitlement object level within roles or profiles. The software associates users with the identities recorded in HR systems, thereby assigning users to their respective identities in business applications. TheFence ARM has a predefined ruleset of sensitive and conflicting accesses built into the software that is defined at the **deepest access object level**. The **risk patterns** have individual risk scores. This is a quantitative, scoring-based risk calculation method, where risk scoring is determined by the potential impact of the incident. Risk patterns are editable, customizable and expandable. Conflicting (SoD) access risks can be set between different business applications or IT technologies.



The screenshot displays the TheFence ARM interface with three main panels: Risk, Activity, and Pattern. The Risk panel shows three risk items with descriptions, IDs, and risk scores (7.0, 4.0, 9.0). The Activity panel shows a search bar and a filter for 'SAP\_ERP | All SAP systems'. The Pattern panel shows a search bar and two patterns: 'User Mass Maintenance' (P125372507) and 'Mass changes to user master records' (P474101540). A 'Pattern Definition' table is also visible on the right.

Auth obj id	Auth field	V. low	V. high
S_TCODE	TCD	SU10	
S_USER_GRP	ACTVT	02	
S_USER_GRP	ACTVT	22	
S_USER_GRP	CLASS	NOT_NULL	
S_USER_PRO	ACTVT	22	
S_USER_PRO	PROFILE	NOT_NULL	

Access risk scores are assigned to users, identities, and access roles (or profiles). The aggregated scores at the end of the analysis **identify the users and roles at high-risk**. In the case of roles, a weight can be applied based on the number of users assigned to them. This approach allows the discovery of low-risk roles within the enterprise's riskiest ones, prompting a review.



Excel Export

Role ID	User count	Total Score
BC_XSL_000	62	29512
BC_ALT_HPA	53	26977
SD_CUS_99L	51	26010
SAP_BC_BMT_WFM_DEVELOPER	51	25857
SD_CUS_99K	49	24990

## Why choose TheFence™ ARM?

### Unique Selling Proposition (USP):

- Access governance in ERP (vendor independency)
- Cross platform analysis
- Rich and tailorable ruleset
- Examine both human & service/technical users
- Identity inventory (from employee to access level)
- Object & Transaction level examination
- Automated, flexible alerting & reporting
- SIEM Integrations (API/export)
- Drill-down capability

### Advantages by TheFence™ ARM:

- Effortless review of complex environments
- Fulfil periodic access review expectations
- Analyze your risk posture like a Big 4 on your own