



AI-powered

Access Platform







# Defend Your Digital Assets with TheFence

Our mission is to ensure that the right **people** have the right level of **access** to the right **resources** at the right time.



“75% of security incidents  
are the result of **mismanaged  
access rights.**”

Gartner®

A detailed illustration of a silver, articulated robotic hand reaching upwards. The hand is positioned on the right side of the frame, with its index finger pointing towards a red rectangular button. The button features a white 'X' icon and the text 'Revoke Access' in white. The background is a soft, abstract gradient of light blue and white, with faint, glowing particle effects scattered around the hand and button.

⊗ Revoke Access



Global cybercrime is a \$10T problem annually (2023)

Cyber

A  
ach

ners

edly  
,  
al  
sulted  
eak of  
B of



## NSA

Edward Snowden, a former NSA contractor, used his authorized access to leak classified information about global surveillance programs. This incident highlighted the risks of insider threats.

engadget

## Samsung says hackers obtained some customer data in newly disclosed breach

The company says Social Security numbers and payment details weren't accessed.



## Samsung

Samsung experienced a data breach where an unauthorized individual gained access to its sys-tems. The breach was discovered in early August, and it was determined that customer data, including names, contact information, and demographic details, had been compromised.

abc NEWS VIDEO LIVE SHOWS ELECTIONS 538 SHOP

## Jack Teixeira agrees to prison sentence of 16 years over Pentagon leaks - report

Massachusetts air national guard member who allegedly leaked Ukraine military secrets on Discord agrees to plead guilty



## US AirForce

Jack Teixeira, a 21-year-old Massachusetts Air National Guardsman, was charged with leaking classified Pen-tagon documents. These documents contained sen-sitive information about national security, including details on the Russia-Ukraine conflict and other international matters.

Subscribe To Newsletters Forbes

## What Tesla's Spygate Teaches Us About Insider Threats



## Tesla

An insider threat incident where a disgruntled employee made unauthorized changes to Tesla's manufacturing operating system and exported sensitive data to third parties.

DATA BREACHES

## HubSpot Cyberatt Account

HubSpot is "acti customer accoun







## HubS

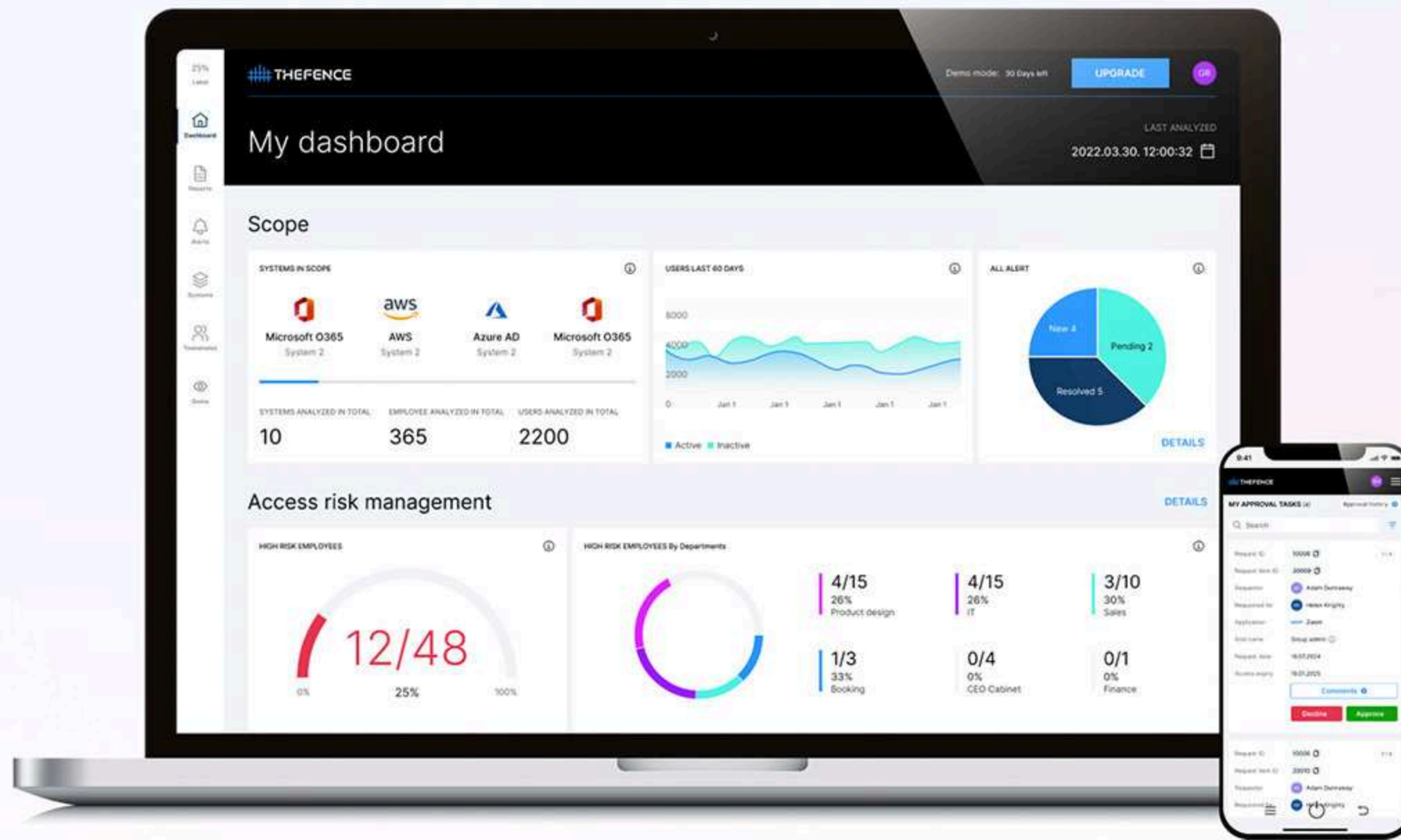
Enterpr  
HubSpo  
investig  
attempt  
custom  
warned  
HubSpo  
already

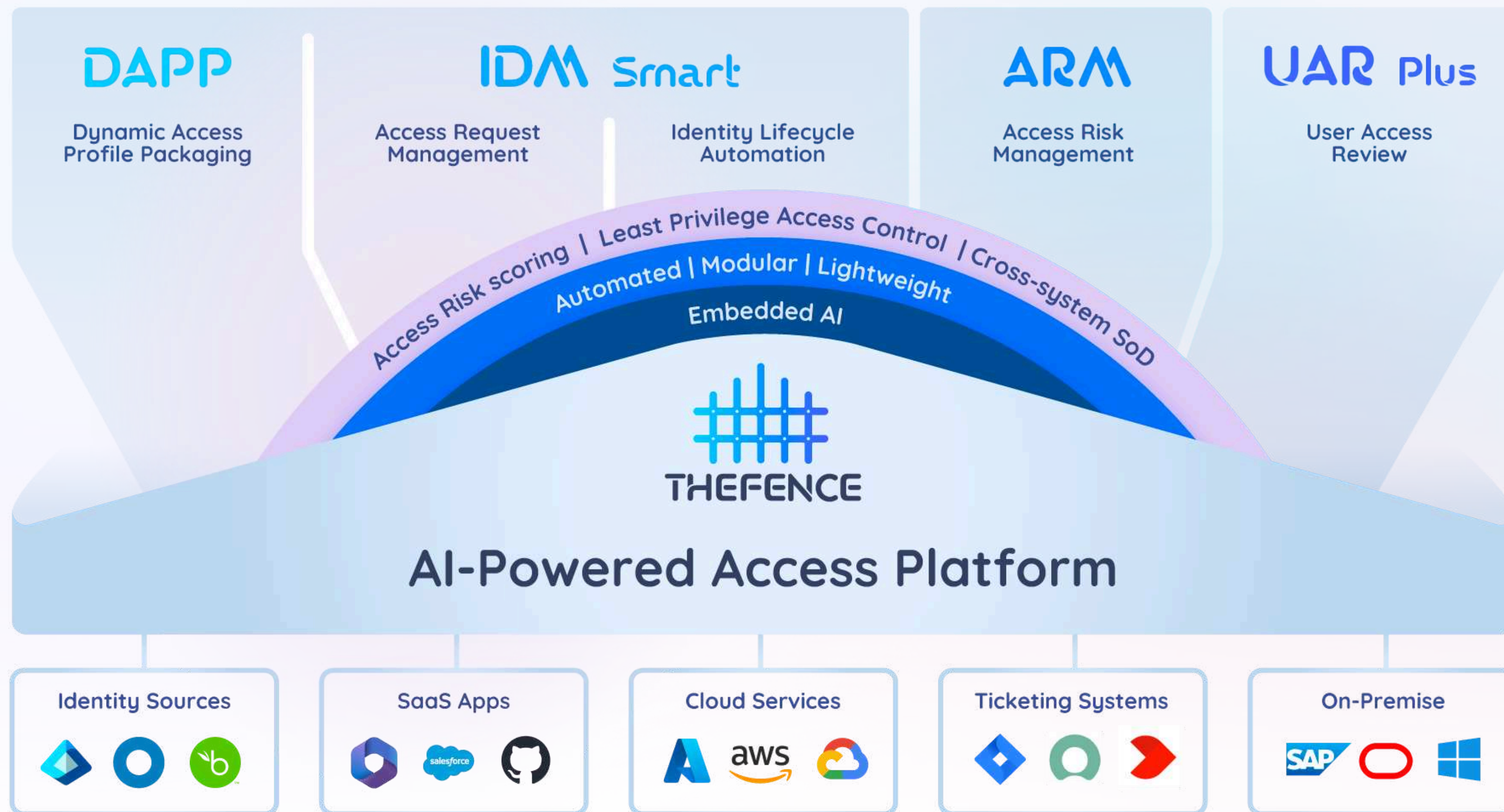


# What is TheFence?

TheFence is a modularly built, next generation **identity security and access management platform** tailored for organizations of all sizes.

-  Automated
-  Modular
-  AI-powered
-  Lightweight

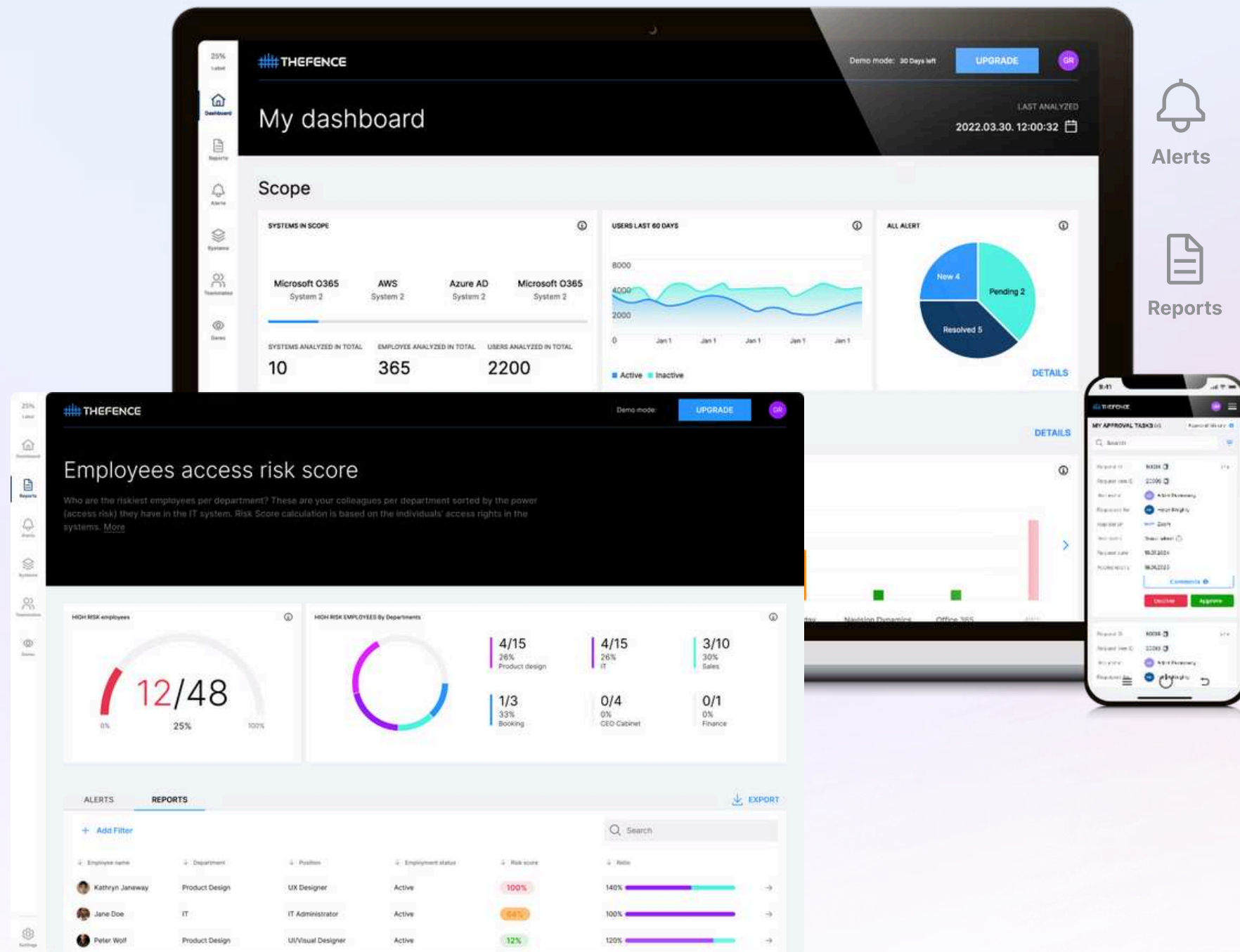






# THEFENCE ARM

## Access Risk Management



An identity threat detection solution to prevent fraud and error, performing a **scoring-based access risk analysis** to enforce the Principle of Least Privilege (PoLP) and automatically identify conflicting permissions (SoD - Segregation-of-Duties).

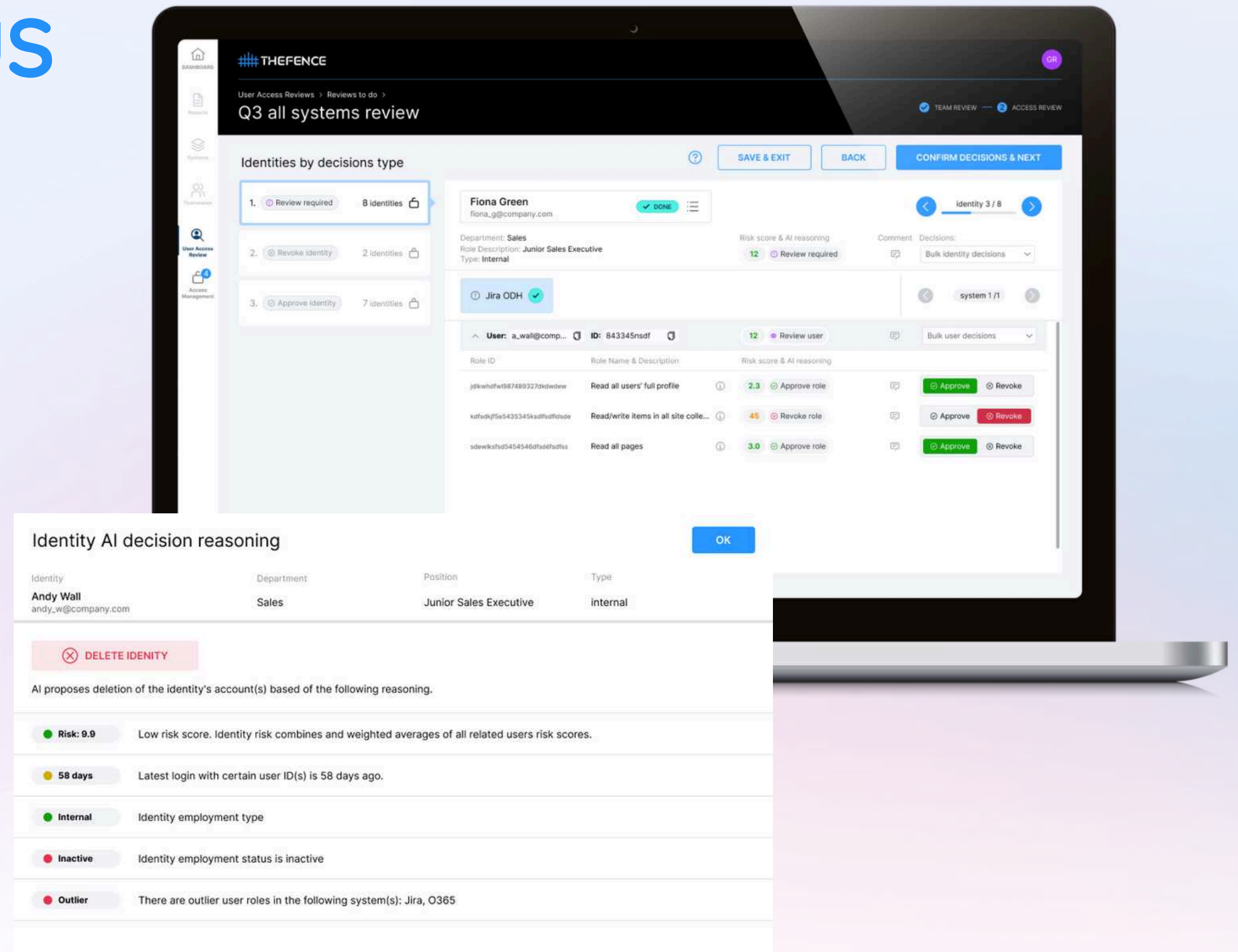
TheFence ARM eliminates operational risks resulting from **human error or mismanaged access rights** in business applications.

# THEFENCE UAR PLUS

## User Access Review

A next-generation, AI-powered work-flow automation: an **intuitive and automated user access review practice** that supports line managers and data owners to make educated and accountable decisions with an AI co-pilot.

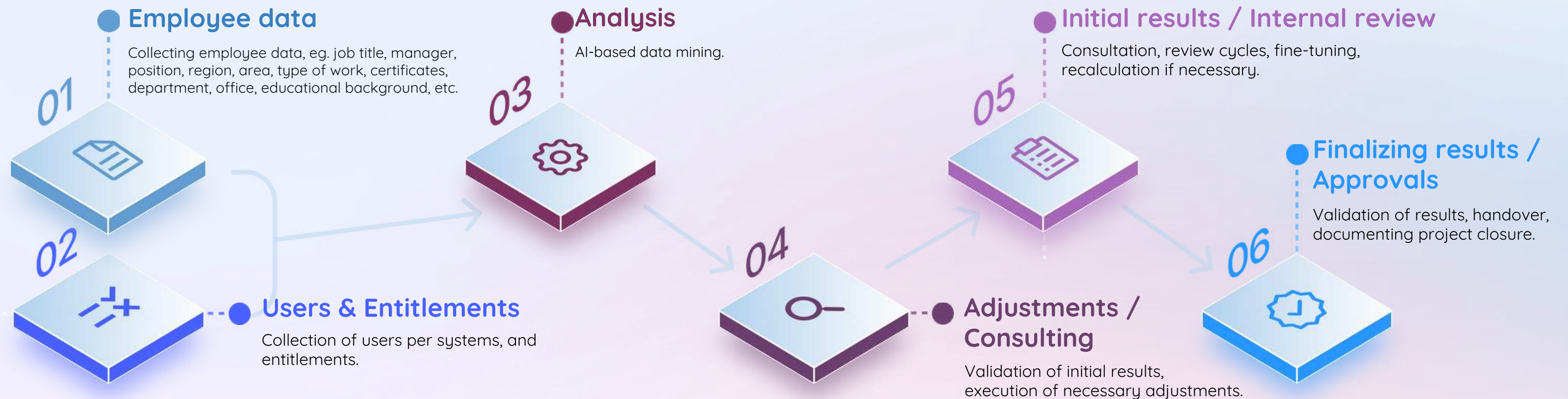
It ensures continuous audit-ready compliance, mandated by regulations such as SOX, HIPAA, GLBA, PCI, NYDFS, SOC2, or NIS2.





# THEFENCE DAPP

Dynamic Access Profile Packaging service



Supported by advanced **AI-based data mining methodologies**, TheFence DAPP, an **identity level access profiling** solution accelerates and secures the onboarding process by automating the creation of default/initial role and access profile packages.

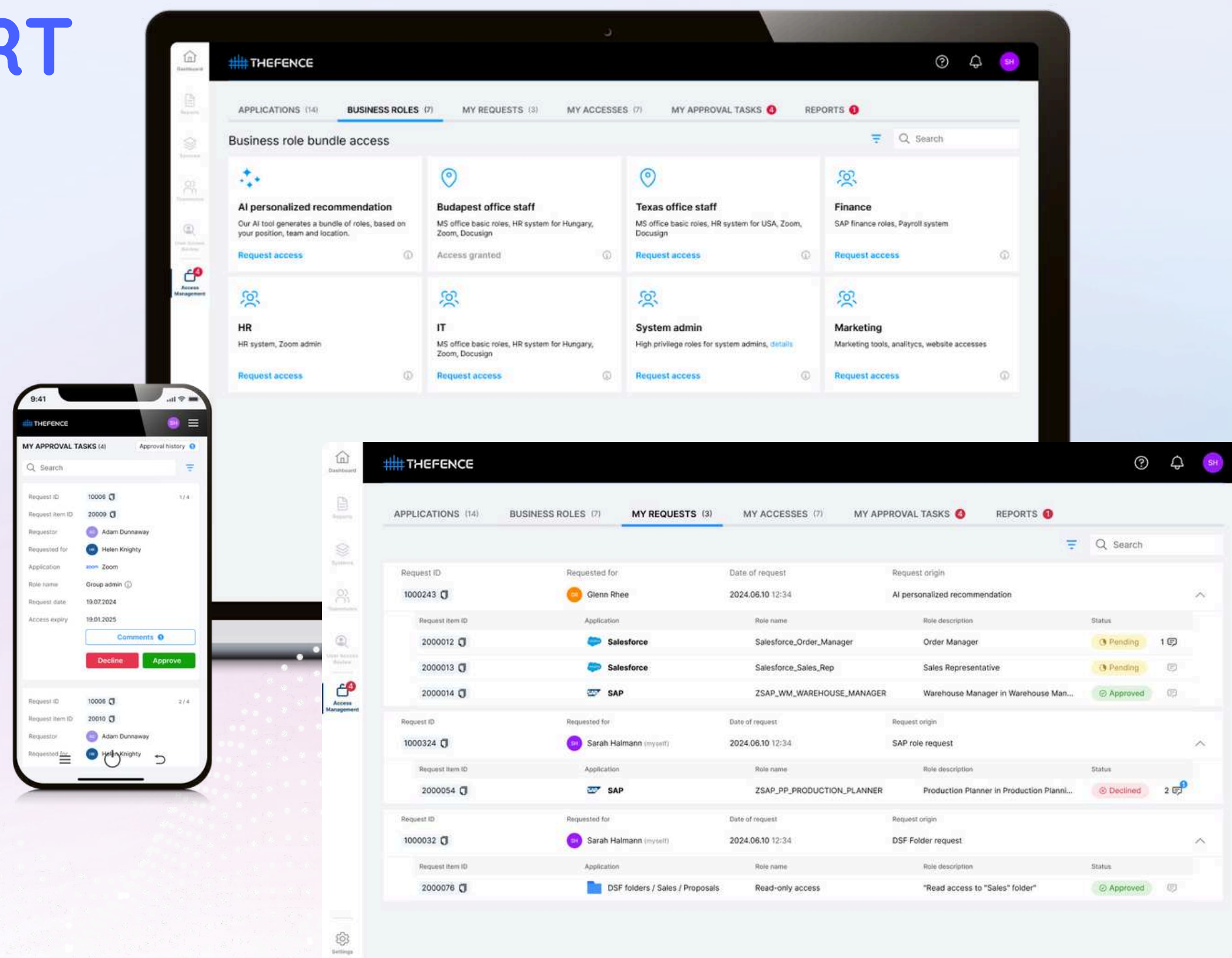
It **also accelerates birthright accesses** to be associated with the specific job/job category (supplemented with the relevant HR attribute combinations of the employees), and any IAM deployments.

# THEFENCE IDM SMART

## Access Request Management

A cost efficient and quickly deployable, baseline access request management solution focusing on **user access lifecycle management**, accelerating the approval process, eliminating access delays.

TheFence IDM SMART offers a smooth experience for both users and approvers. It provides APIs and Events to facilitate the integration of external processes and tools.





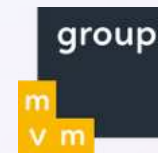
# TheFence Innovations

-  **Embedded AI**  
The first AI co-pilot for decision support (UAR) and AI-profiler (DAPP) in the industry.
-  **Lightweight hybrid platform**  
Easy-to-deploy, resource-friendly, modular solution stack.
-  **Granular depth**  
Discovery of access risks down to the deepest possible level of elementary entitlement objects.
-  **Cross-system SoD**  
Ability to detect cross-application conflicts of interest.
-  **Risk scoring**  
A scoring-based, AI-supported metric system quantifying the users' entitlement risks.



## Customer References

## Accolades





# Embedded AI

across THEFENCE identity platform

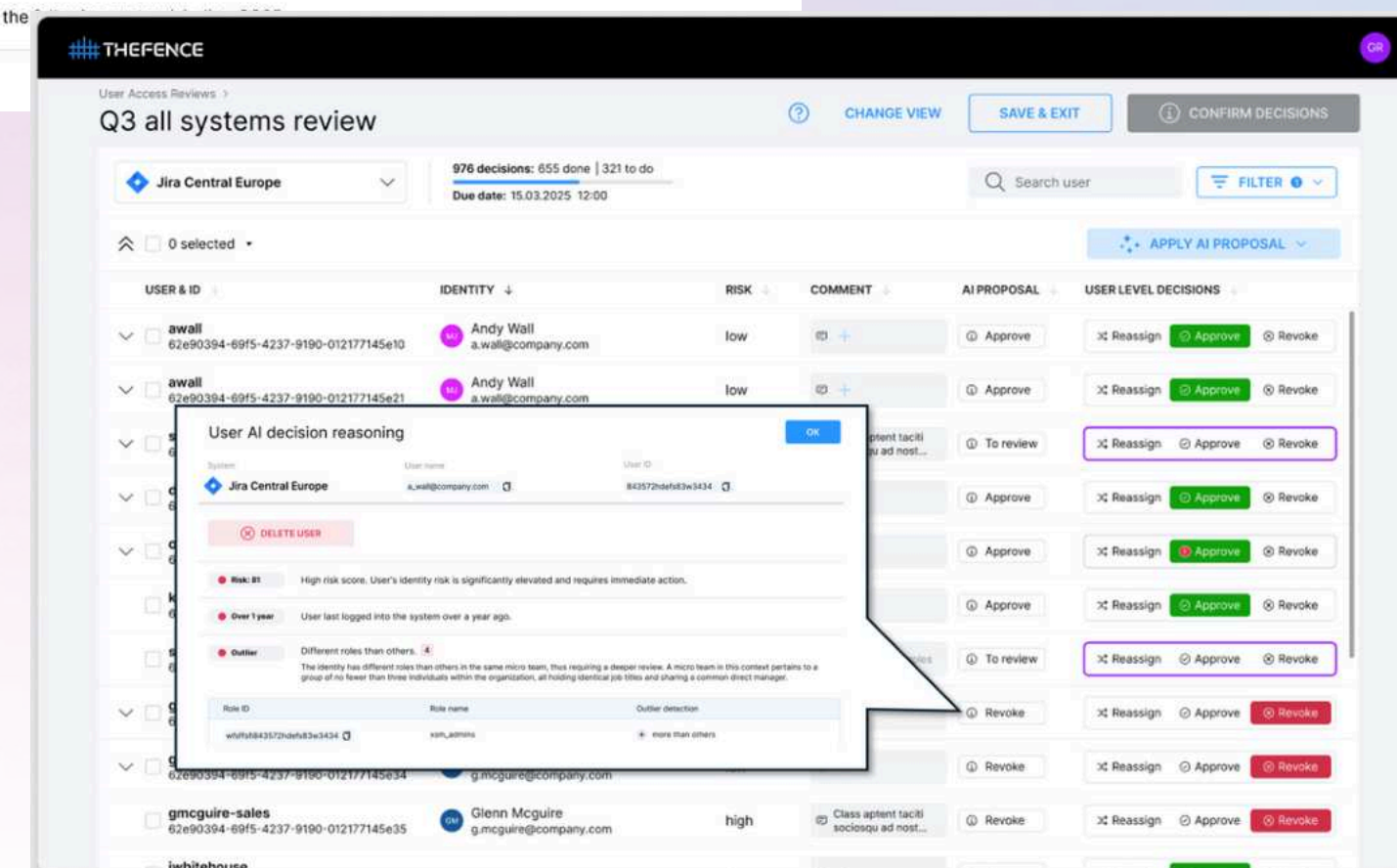
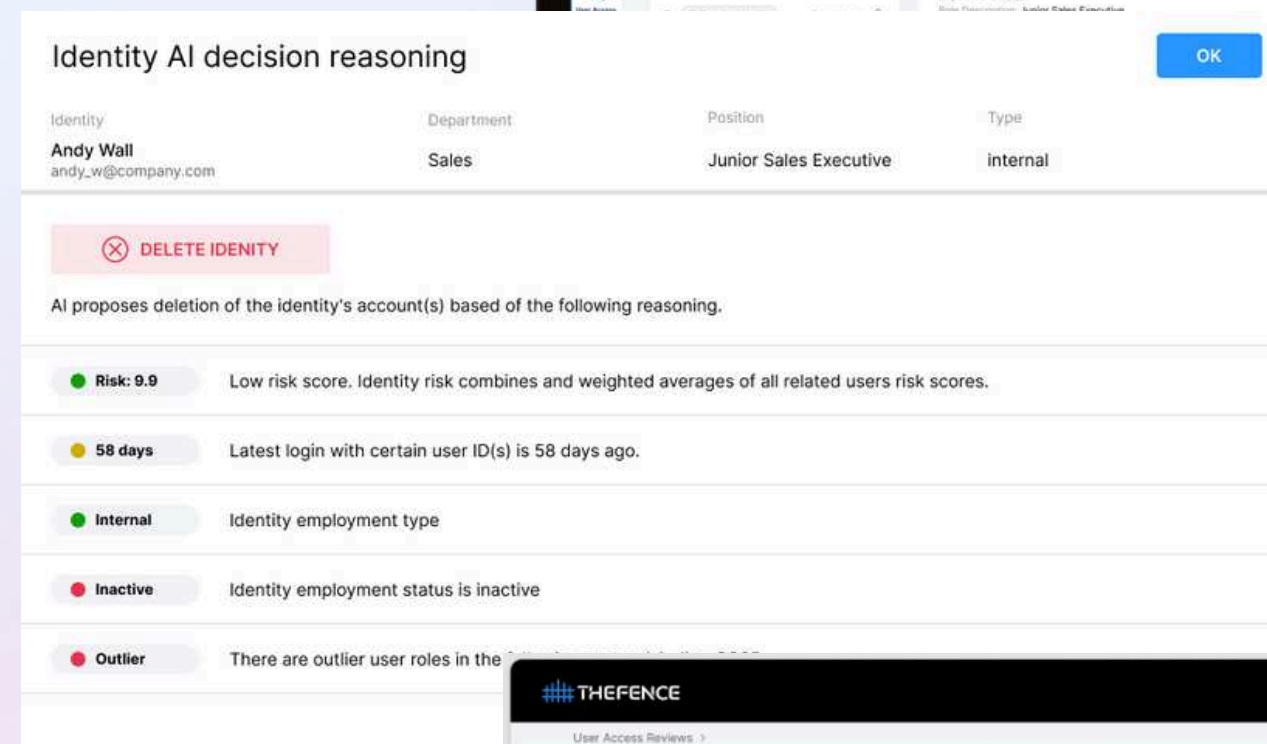


# THEFENCE UAR PLUS

User Access Review powered by AI

The **AI copilot** in TheFence™ UAR Plus streamlines the entire User Access Review process by automatically analyzing user roles, activity, and risk levels to generate intelligent recommendations for access approvals or removals.

It supports data owners with clear, **AI-driven suggestions**, significantly reducing the time and effort required for reviews while improving decision accuracy. Integrated with existing systems, it automates workflows from data preparation to audit-ready reporting, enhancing security, compliance, and operational efficiency.





# THEFENCE DAPP

## Dynamic Access Profile Packaging service

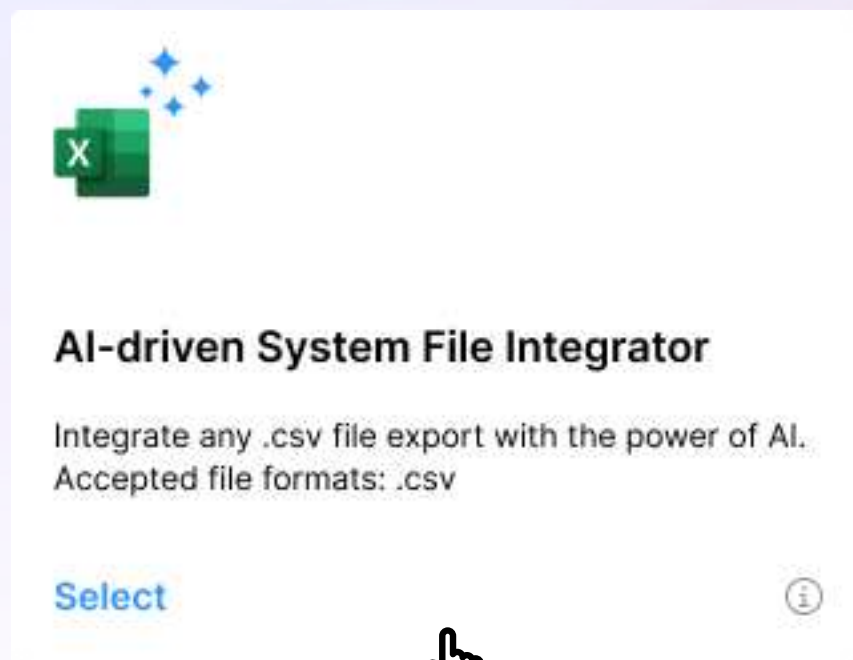


TheFence™ DAPP (Dynamic Access Profile Packaging) uses **AI-powered data mining** to group employees into **small clusters** based on detailed HR attributes and historical access data, allowing it to generate highly accurate default access profiles for new or transferred employees.

In favorable cases, this clustering allows 80-95% of the necessary permissions to be accurately assigned. This not only means that employees can start working sooner, but also that the background work required for this can be greatly reduced.

# AI-driven System File Integration

**AI-driven system file integration** streamlines the process of merging and organizing identities, users, and accesses. By leveraging machine learning algorithms, it can automatically detect, reformat, and merge access-related data from the identity level to the access profile content level. This function eliminates the resource-intensive preparatory tasks of IT security (UAR) teams.



The screenshot displays the THEFENCE Cognitive Universal Integration interface. The top navigation bar includes the THEFENCE logo, a "Demo mode: 30 Days left" warning, an "UPGRADE" button, and a user profile icon labeled "GR". Below the navigation bar, the breadcrumb "All systems > Systems >" is followed by the title "Cognitive Universal Integration". A progress bar shows six steps: 1. SYSTEM DETAILS (checked), 2. SYSTEM STRUCTURE (active), 3. USER DATA, 4. USER ROLES, 5. ROLES STRUCTURE, and 6. ROLES DATA. The main content area is titled "AD Germany - Production accounts" and includes a "GUIDE" link, a "BACK" button, and a "SAVE SYSTEM STRUCTURE" button. The interface is divided into three columns: "YOUR FILE STRUCTURE", "SYSTEM STRUCTURE REQUIREMENTS", and "AI DATA MAPPING".

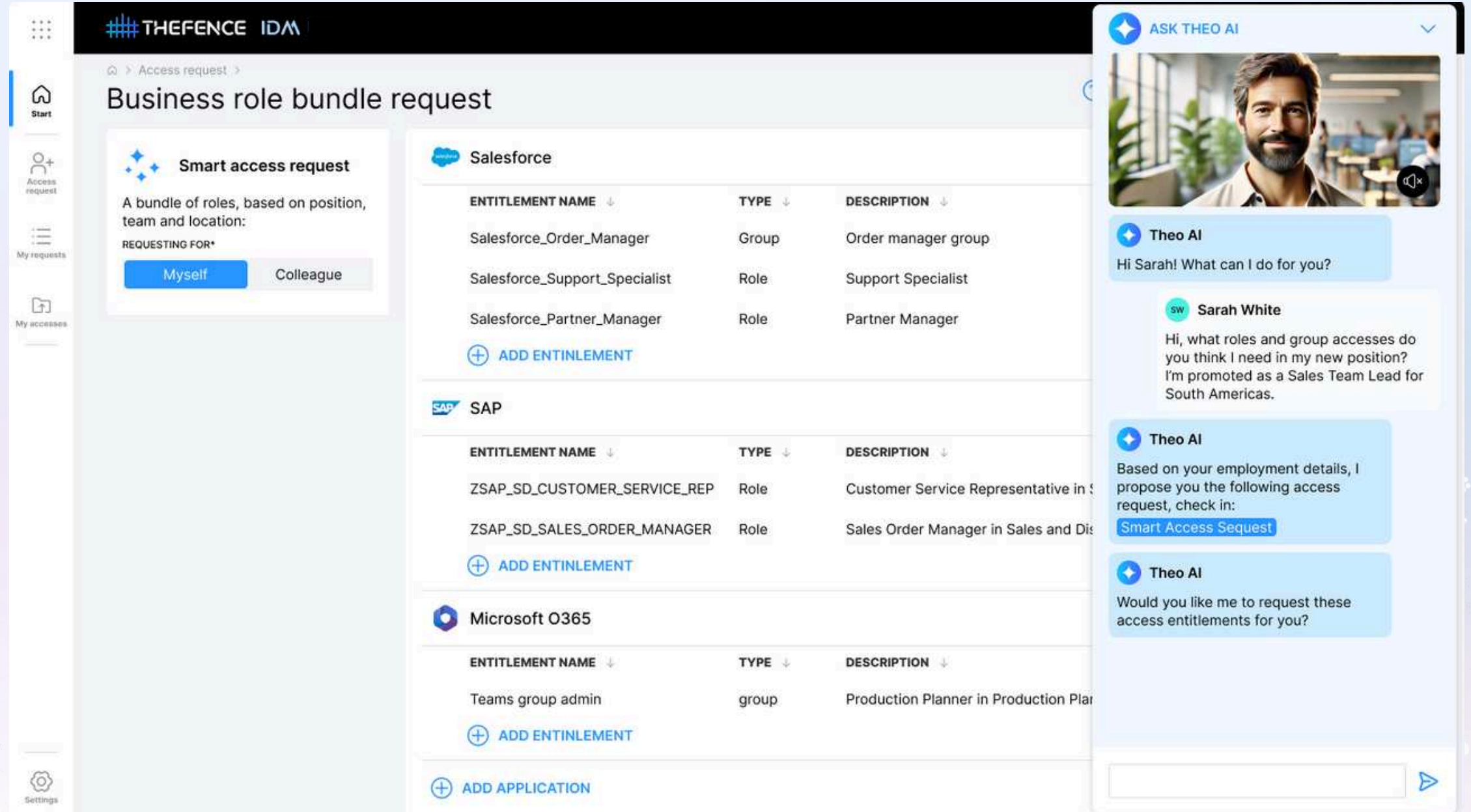
YOUR FILE STRUCTURE	SYSTEM STRUCTURE REQUIREMENTS	AI DATA MAPPING
First name	Name*	= First name + Last name
Last name	Account status*	= Account status
Account status	SAM account name*	= SAM account name
Department	Logon name*	= Login name
SAM account name	Password status*	= No match found
Login name	Password expiry date	= No match found
Password status	OU name	= Department
Password expiry		
Squad		
Fullname		



# THEFENCE IDM SMART

**AI-based Access Profiler** analyzes new user roles and assigns appropriate access based on historical data and identity attributes, AI suggests access modifications proactively, ensuring compliance with Principle of Least Privilege.

It integrates our DAPP solution into the IDM Smart system.



The screenshot displays the THEFENCE IDM Smart interface. The main section is titled 'Business role bundle request' and shows a 'Smart access request' for 'Salesforce' and 'SAP' systems. The 'Salesforce' section lists three entitlements: 'Salesforce\_Order\_Manager' (Group), 'Salesforce\_Support\_Specialist' (Role), and 'Salesforce\_Partner\_Manager' (Role). The 'SAP' section lists two entitlements: 'ZSAP\_SD\_CUSTOMER\_SERVICE\_REP' (Role) and 'ZSAP\_SD\_SALES\_ORDER\_MANAGER' (Role). The 'Microsoft O365' section lists one entitlement: 'Teams group admin' (group). Each section has an 'ADD ENTITLEMENT' button. At the bottom, there is an 'ADD APPLICATION' button.

On the right side, there is a chatbot interface for 'Theo AI'. The chatbot is asking 'Hi Sarah! What can I do for you?'. Sarah White responds: 'Hi, what roles and group accesses do you think I need in my new position? I'm promoted as a Sales Team Lead for South Americas.' Theo AI responds: 'Based on your employment details, I propose you the following access request, check in: Smart Access Sequest'. Theo AI then asks: 'Would you like me to request these access entitlements for you?'.

THANK YOU!



**For more information, please visit**  
[www.thefence.net](http://www.thefence.net)

XS Matrix Global Co.  
XS Matrix Security Solutions Kft.

[hello@thefence.net](mailto:hello@thefence.net)

